

Special  
conditions



## Overview

# Partner-Hotels 2025

**For guests, congress & course participants, relatives of patients and staff members of Balgrist University Hospital**

Rooms can be booked either with booking code, via e-mail or directly by phone at the respective hotel. The published rates only apply for direct bookings for individual rooms. Rates for group bookings upon request.

We wish you a pleasant stay in Zurich.

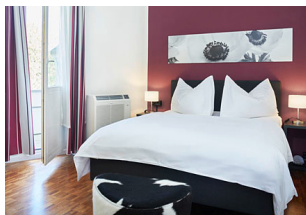


Universität  
Zürich

swiss  
olympic

Medical  
Center

## Hotel Hottingen



Hottingerstr. 31 /  
Cäcilienstr. 10  
8032 Zürich  
T +41 44 256 19 19  
[info@hotelhottingen.ch](mailto:info@hotelhottingen.ch)  
[www.hotelhottingen.ch](http://www.hotelhottingen.ch)

- Close to Museum of Fine Arts and Klusplatz
- Travel time to Balgrist approx. 20 minutes
- Tram 11 / Forchbahn S18 from Kreuzplatz

*«3\*-Garni-Hotel with 28 comfortable rooms in different categories with floor mini-kitchen and launderette»*

Special rates including breakfast:

- Best available daily rate minus 15% reduction
- Single room from CHF 90
- Double room from CHF 120

Car park at the hotel CHF 15 per day

Further room categories upon request, special rate for more than 3 nights

Barrier-free room available

---

## Boutique Hotel NI-MO



Seefeldstrasse 16  
8008 Zürich  
T +41 44 370 30 30  
[welcome@hotel-nimo.ch](mailto:welcome@hotel-nimo.ch)  
[www.hotel-nimo.ch](http://www.hotel-nimo.ch)

- Seefeld district, close to lake of Zurich
- Travel time to Balgrist approx. 15 minutes
- Tram 11 / Forchbahn S18 from Stadelhofen station

*«Just like our name is our mission: "NI" for Night and "MO" for Morning, we are going to make your stay at night and morning to a real experience, thanks to our sense of passionate commitment for the particular and for authentic cordiality.»*

Special rates including breakfast:

- Classic single room CHF 180
- Classic double room CHF 210 (1 adult) / CHF 230 (2 adults)
- Premium double room CHF 220 (1 adult) / CHF 240 (2 adults)
- Premium balcony room CHF 230 (1 adult) / CHF 250 (2 adults)

Car park in the courtyard, price upon request

## Alma Hotel



Mainaustrasse 24  
8008 Zürich  
T +41 44 380 80 10  
[info@almahotel.ch](mailto:info@almahotel.ch)  
[www.almahotel.ch](http://www.almahotel.ch)

- Seefeld district, close to lake of Zurich
- Travel time to Balgrist approx. 20 minutes
- Tram 11 / Forchbahn S18 from Stadelhofen station

*«Our art nouveau villa has been here in Seefeld for over 100 years. Your temporary home away from home. What are we passionate about? Our hotel operates sustainably and socially. Serves regional, fair-trade food. Creates spaces beyond its 16 rooms and two apartments.»*

Special rates including vegetarian breakfast, booking code "AlmaFriends25":

- Best available daily rate minus 20% reduction

Limited parking spaces at the hotel, pre-reservation required CHF 25 per day

Public car parks "Feldegg" & "Utoquai" close to the hotel CHF 35–40 per day

Barrier-free room available

---

## Hotel Seehof



Seehofstrasse 11  
(Entrance Dufourstrasse 5)  
8008 Zürich  
T +41 44 254 57 57  
[reception@seehof.ch](mailto:reception@seehof.ch)  
[www.seehof.ch](http://www.seehof.ch)

- Seefeld district, opposite the Opera House
- Travel time to Balgrist approx. 15 minutes
- Tram 11 / Forchbahn S18 from Stadelhofen station

*«In reference to the omnipresence of water in the city, the rooms exude a timeless nautical look and surprise with bespoke and understated details. An unforgettable atmosphere for your stay in Zurich!»*

Special rates including breakfast:

- Single room CHF 200
- Double room CHF 230 (1 adult) / CHF 270 (2 adults)
- Double room plus CHF 250 (1 adult) / CHF 290 (2 adults)

Public car park "Opera" close to the hotel CHF 45 per day

## Hotel Felix



Zähringerstrasse 25  
8001 Zürich  
T +41 44 256 76 00  
[info@hotelfelix.ch](mailto:info@hotelfelix.ch)  
[www.hotelfelix.ch](http://www.hotelfelix.ch)

- In Zurich's Old Town
- Travel time to Balgrist approx. 25 minutes
- Tram 4/15 or Bus 31 until Bellevue, change to Tram 11

*«Modern, because the hotel has seen extensive renovations that have made it resplendent with bright interiors and tasteful design. Fancy, because our art should offer an oasis of well-being for every guest.»*

Special rates including breakfast:

- Single room Tiny CHF 180 / Standard CHF 200
- Double room CHF 230 (1 adult) / CHF 270 (2 adults)
- Double room Plus CHF 250 (1 adult) / CHF 290 (2 adults)

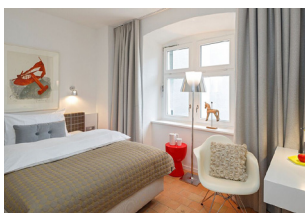
Parking / courtyard parking upon request

Public car park "Urania" close to the hotel CHF 45 per day

Barrier-free room available

---

## Hotel Rössli



Rössligasse 7  
8001 Zürich  
T +41 44 256 70 50  
[reception@hotelroessli.ch](mailto:reception@hotelroessli.ch)  
[www.hotelroessli.ch](http://www.hotelroessli.ch)

- In Zurich's Old Town
- Travel time to Balgrist approx. 20 minutes
- Tram 11 / Forchbahn S18 from Stadelhofen station

*«The trendy three-star boutique hotel is a small work of art, modern in design and historically protected. The Hotel Rössli is in a prime location in the heart of Zurich's Old Town.»*

Special rates including breakfast:

- Single room CHF 200
- Double room CHF 230 (1 adult) / CHF 270 (2 adults)
- Double room Plus CHF 250 (1 adult) / CHF 290 (2 adults)

Public car park "Opera" close to the hotel CHF 45 per day

## Opera Hotel



Dufourstrasse 5  
8008 Zürich  
T +41 44 258 99 99  
[welcome@operahotel.ch](mailto:welcome@operahotel.ch)  
[www.operahotel.ch](http://www.operahotel.ch)

- Seefeld district, opposite the Opera House
- Travel time to Balgrist approx. 15 minutes
- Tram 11 / Forchbahn S18 from Stadelhofen station

*«Our 4-star hotel is ideally located amidst a vibrant mix of culture, entertainment, and business. We blend personal service and creativity with a touch of ease, offering individually designed rooms.»*

Special rates excluding breakfast:

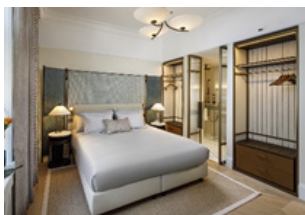
- Single room with Grand-Lit Classic CHF 240
- Double room Classic Plus CHF 270
- Double room Superior CHF 330 / Superior Plus CHF 370

Breakfast special price CHF 25 per person

Public car park "Opera" close to the hotel CHF 45 per day

---

## Ambassador Hotel



Falkenstrasse 6  
8008 Zürich  
T +41 44 258 98 98  
[welcome@ambassadorhotel.ch](mailto:welcome@ambassadorhotel.ch)  
[www.ambassadorhotel.ch](http://www.ambassadorhotel.ch)

- Seefeld district, opposite the Opera House
- Travel time to Balgrist approx. 15 minutes
- Tram 11 / Forchbahn S18 from Stadelhofen station

*«The hotel offers a unique blend of historical significance and contemporary sophistication, making it an ideal destination for travelers seeking both comfort and a touch of history in the heart of Zurich.»*

Special rates excluding breakfast:

- Single room Classic CHF 300
- Double room Classic Plus CHF 355
- Double room Superior CHF 430 / Superior Plus CHF 470

Breakfast etagère special price CHF 28 per person

Public car park "Opera" close to the hotel CHF 45 per day

## Sorell Hotel Seefeld



Seefeldstrasse 63  
8008 Zürich  
T +41 44 387 41 41  
[seefeld@sorellhotels.com](mailto:seefeld@sorellhotels.com)  
[www.sorellhotels.com/  
seefeld](http://www.sorellhotels.com/seefeld)

- Seefeld district
- Travel time to Balgrist approx. 15 minutes
- Tram 11 / Forchbahn S18 from Stadelhofen Station or Kreuzplatz

*«In Zurich's Seefeld district, where art and culture, maritime flair and trendy and trendy locations combine to create a unique blend, the Sorell Hotel Seefeld invites you to enjoy stylish accommodation with excellent service.»*

Special rates including breakfast:

- Standard single room CHF 250
- Standard double room CHF 275 (1 adult) / CHF 305 (2 adults)
- Grand Standard double room CHF 290 (1 adult) / CHF 320 (2 adults)

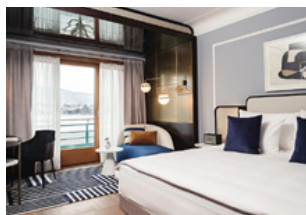
Special rate for weekends online or upon request

Parking / courtyard parking CHF 30 per day

Barrier-free room available

---

## Ameron Zürich Bellerive au Lac



Utoquai 47  
8008 Zürich  
T +41 44 244 42 42  
[info@ameron-zuerich.ch](mailto:info@ameron-zuerich.ch)  
[www.ameron-zuerich.ch](http://www.ameron-zuerich.ch)

- At the lake of Zurich
- Travel time to Balgrist approx. 20 minutes
- Tram 11 / Forchbahn S18 from Stadelhofen station

*«Discover the special combination of urban lifestyle and Mediterranean flair directly on Lake Zurich at the 4-star Superior Hotel AMERON Zurich Bellerive au Lac. The unique location and the stylish design in modern Art Deco style create the special charm of the lavishly renovated hotel.»*

Special rates including breakfast, booking code "C\_BALG":

- 15% discount off the daily room rate
- Room rates from CHF 280

Car park next to the hotel CHF 37 per day

Barrier-free room available



## Central Plaza Hotel



Central 1  
8001 Zürich  
T +41 44 256 56 56  
[info@central.ch](mailto:info@central.ch)  
[www.central.ch](http://www.central.ch)

- At Central, close to the main train station (Hauptbahnhof)
- Travel time to Balgrist approx. 25 minutes
- Tram 4/15 or Bus 31 until Bellevue, change to Tram 11

*«The modern four-star Central Plaza Hotel is located directly on the Limmat, next to Zurich's main railway station. In addition to its central location, the hotel is known for its combination of modern lifestyle and excellent service - for over 139 years.»*

Special rates excluding breakfast:

- 10% discount on best available homepage rate
- Room rates from CHF 220
- Single room max. CHF 245

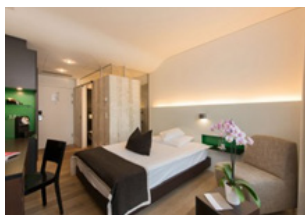
Continental breakfast CHF 24 per day

Car park at the hotel CHF 35 per day

Barrier-free room available

---

## Hotel Glockenhof



Sihlstrasse 31  
8001 Zürich-City  
T +41 44 225 91 91  
[info@glockenhof.ch](mailto:info@glockenhof.ch)  
[www.glockenhof.ch](http://www.glockenhof.ch)

- Close to Bahnhofstrasse / Paradeplatz / Main train station (Hauptbahnhof)
- Travel time to Balgrist approx. 30 minutes
- Tram 11 from Rennweg

*«We're only a stone's throw from Bahnhofstrasse and a 5-minute walk from the Paradeplatz: there's hardly a more central place to stay, dine or hold a conference in Zurich! It's our highly personal ambience, our sense of tradition, our high standard of service, our versatility, and our flexibility in every way that makes us a true city oasis.»*

Special rates including breakfast:

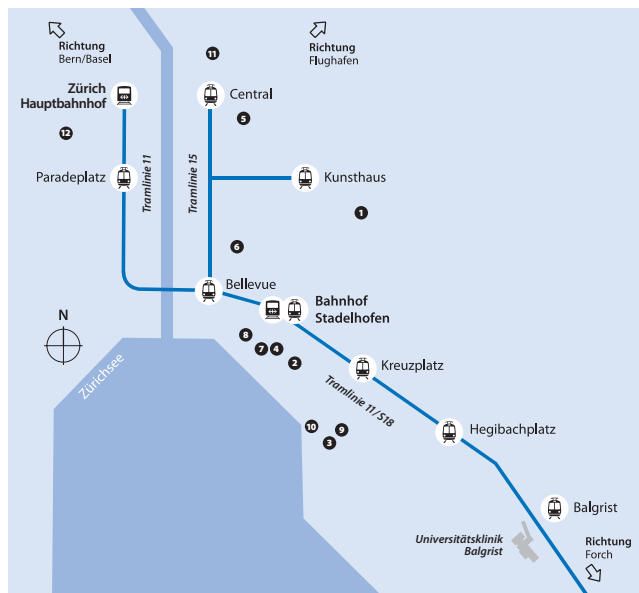
- Single room Style CHF 320 / Comfort Chic CHF 350 / Superior Chic CHF 380
- Double room Style CHF 400 / Comfort Chic CHF 440 / Superior Chic CHF 480

Special rate for early bookings, long stay and weekends upon request

Car park at the hotel CHF 30 per day

Barrier-free room available

## Location and accessibility



Google-Maps



### Hotels

- ❶ Hotel Hottingen
- ❷ Boutique Hotel NI-MO
- ❸ Alma Hotel
- ❹ Hotel Seehof
- ❺ Hotel Felix
- ❻ Hotel Rössli
- ❼ Opera Hotel
- ❽ Ambassador Hotel
- ❾ Sorell Hotel Seefeld
- ❿ Ameron Zürich Bellerive au Lac
- ⓫ Central Plaza Hotel
- ⓬ Hotel Glockenhof

### Public transport

- 🚊 Tramline 15 until Bellevue
- 🚊 Tramline 11, S18 until Balgrist

### Contact:

Stefanie Pfister  
Coordinator congresses &  
events

### Balgrist University Hospital

Forchstrasse 340  
8008 Zürich, Schweiz  
T + 41 44 386 38 33  
kongresse@balgrist.ch  
www.balgrist.ch

